



## Snead Golf Course 26 - 776 Sam Snead Drive

Designed with elegance and fairway living in mind, this French farmhouse style home features a great room with a 23' ceiling with exposed beams, gas log fireplace, hardwood floors, and French doors leading to the patio, located along hole 4 of the members-only Snead golf course. The modern kitchen is highlighted by a butcher block bar, granite countertops, Sub-Zero/Wolf appliances, and custom cabinetry. Adjacent to the kitchen is a breakfast nook with wet bar, including a built-in ice maker, under-counter wine/standard refrigerators (both Sub-Zero), and glassware cabinets. Wind down in the epitome of luxury in the master suite, with large, private sitting room with porch access, his and her bathroom with heated floors, and immense walk-in closet with built-in cabinets. Other conveniences include a 3-car garage with apartment, loft overlooking the great room, crown molding, recessed lighting, and several updates in 2016. Located near The Members' Lodge and in close proximity to The Greenbrier resort and amenities.

THE *Greenbrier*  
SINCE 1778  
SPORTING  
CLUB®

5 Kate's Mountain Road  
White Sulphur Springs, WV 24986  
855-764-7398

Discover *Life as Few Know It* by visiting [greenbrierliving.com](http://greenbrierliving.com) | 855-764-7398





### Great Room with Exposed Beams

High 23' ceilings, exposed beams, sunlights, and a 2-story gas fireplace create elegance, while natural light floods the space, creating warmth throughout. Patio access through French doors with stunning golf course views.

*Great Room Dimensions 32'6" x 24' = 780 SF*



### Kitchen with Custom Cabinetry

Truly a chef's delight, the kitchen features custom cabinetry, Sub-Zero and Wolf appliances, a butcher block bar, and granite countertops. A breakfast nook and wet bar is located adjacent and includes a built-in ice maker, under counter wine and standard refrigerators, and cabinets for glassware.

*Kitchen Dimensions 13' x 11'4" = 147 SF*



### Master Bedroom with Adjacent Sitting Room

Enjoy your own private retreat with this large master bedroom. An adjacent sitting room grants access to the patio and meticulously maintained outdoor area, along hole #4 of The Snead.

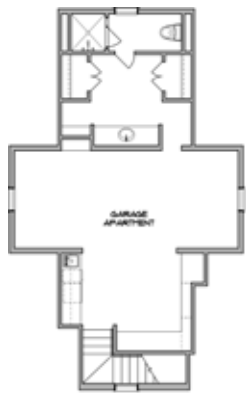
*Master Bedroom Dimensions 18' x 17'9" = 320 SF*



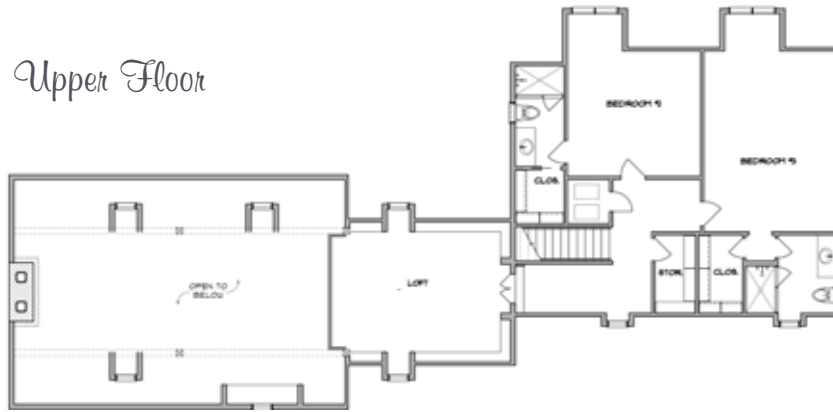
### His & Her Bathroom with Walk-in Closet

This expansive his and her master bath with 117 square foot walk-in closet needs to be seen to be believed. The glass enclosed marble shower anchors the space, while the built-in closet cabinetry leaves plenty of room.

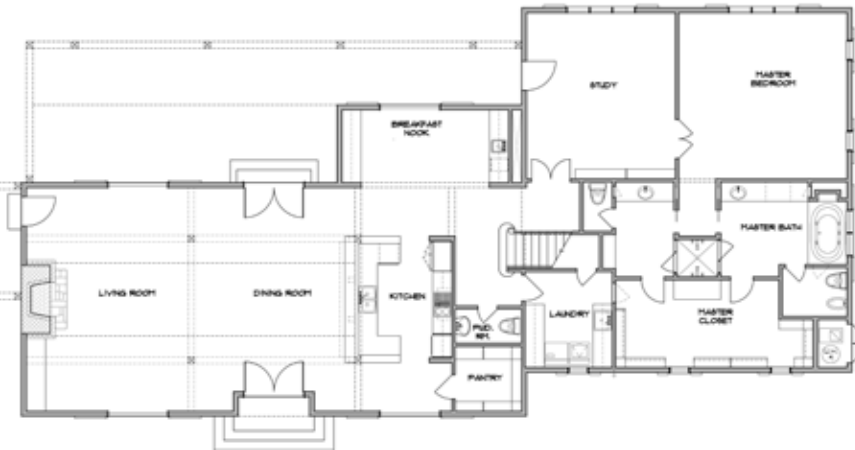
*Master Bath Dimensions 24'6" x 19'9" = 484 SF (including 117 SF WIC)*



Upper Floor



Main Floor



# Features

4 Bedrooms & 5½ Bathrooms

Views Fairway

Architect Jack Arnold

Builder Main Street Building Group

Year Built 2013

Landscape Architect TerraCare

Square Footage 3,928 Main House

(4,864 including garage apartment)

## Exterior Features

- Detached 3-car Garage with Apartment

## Interior Features

- Several Updates in 2016
- French Farmhouse Style
- Loft Overlooking Great Room
- Crown Molding
- Recessed Lighting
- 23' Ceiling in Great Room
- Gas Fireplace
- Hardwood Flooring
- Exposed Beams
- Butcher Block Bar
- Granite Countertops
- Sub-Zero/Wolf Appliances
- Custom Cabinetry
- His and Her Bathroom with Heated Floors and Huge 117 SF Walk-in Closet in Master Suite
- Large Sitting Room with Porch Access Adjacent to Master Bedroom
- Breakfast Nook with Wet Bar, Built-in Ice Maker, Under Counter Wine/Standard Refrigerators, and Cabinets for Glassware





**The exclusive private residential community at The Greenbrier**



855-764-7398

[home@greenbrierliving.com](mailto:home@greenbrierliving.com)

[greenbrierliving.com](http://greenbrierliving.com)

- An award-winning golf course, The Snead – an 18-hole Tom Fazio-designed golf course
- Eastern-inspired spa, Ananda in the Alleghenies
- Full-service equestrian center with boarding option
- Sports complex with infinity pool
- Indoor squash courts
- 25-foot climbing wall
- An exclusive mountaintop lodge, The Summit, with Activities Barn offering basketball/volleyball courts and infinity pool, outdoor amphitheater, mini-golf and play ground
- Access to over 20 miles of hiking and biking trails
- Members enjoy complete access to the 55 activities and amenities at The Greenbrier resort, including three championship golf courses: The Old White TPC, The Greenbrier, and The Meadows.



Download our app at  
**GSCAPP.COM** 

Obtain the Property Report as required by Federal law and read it before signing anything. No Federal Agency has judged the merits or value, if any, of this property. This is not intended to be an offer to sell nor a solicitation of offers to buy real estate in Greenbrier Sporting Club by residents of Hawaii, Idaho, Illinois, and Oregon or in any other jurisdiction where prohibited by law. This project is registered with the New Jersey Real Estate Commission, N.J. Reg. No. 11-59-0002. This project is registered in pursuant to New York State Department of Law's simplified procedure for Homeowners Associations with a De Minimus Cooperative Interest and contained in a CPS-7 application available from the sponsor. File No. HO-00-0082. This project is registered with the Pennsylvania State Real Estate Commission, Registration No. OL-000654. Use of recreational facilities and amenities requires a separate club membership. Plans, renderings, designs, dimensions, specifications, material and other depictions, as well as the number, type, availability, location, appearance and pricing of lots and homes are subject to change without notice. Illustrations are artists' depictions only and may differ from completed improvements. We are pledged to the letter and spirit of U.S. policy for the achievement of equal housing opportunity throughout the nation. We encourage and support an affirmative advertising and marketing program in which there are no barriers to obtaining housing because of race, color, religion, sex, handicap, familial status or national origin.