

SUMMIT VILLAGE 1 - 221 SUMMIT VILLAGE TRAIL

Relaxation and luxury await you at this modern mountain retreat, perfect for everyday living or vacation stays. With stunning mountain views and adjacent to Summit Lodge, Summit Village 1 truly offers something for everyone. The soft colored stone and cedar on the exterior complement the natural environment and expansive rear outdoor living takes full advantage of the breathtaking view. The interior features 4 bedrooms with ensuite baths to ensure comfort and privacy for all guests. Open concept main living space, featuring a fireplace and bar, allows for easy entertaining with a modern flair. Built by two of the finest homebuilders in the Midwest and professional interior designers, the materials and finishing boast the highest quality and attention to detail. With a professional kitchen equipped with Wolf and Subzero appliances, a master bath suite adorned in Carrara marble, custom designer lighting from Kelly Wearstler, Aerin and Peter Bristol and wide plank walnut flooring, luxury truly surrounds you and your guests. Being an Alexa smart home with voice-controlled window treatments, this home offers user-friendly technology to enhance your experience. Carefully selected designer furnishings from Century, Noir and EJ Victor, a full-stocked kitchen featuring Staub cookware and many other resort-style details, like Versai linens, complete this one-of-a-kind Summit Village oasis.

Greenbrier[®]
LIVING

(855) 764-7398
GreenbrierLiving.com



GREAT ROOM

Featuring wide plank walnut flooring, a fireplace, and bar, this open great room with an abundance of natural light will be the perfect venue to entertain or relax.



MASTER SUITE

The master suite features coffered ceiling, wide plank walnut flooring, and multiple windows providing an exquisite view. The master bath provides an oasis of modern luxury with its tub and separate shower, his and hers vanity, custom cabinetry, and Carrara marble.



KITCHEN

This professional kitchen is sure to be a chef's delight with its Wolf and Subzero appliances, custom cabinetry, ample island, pendant lighting, and top quality finishes.



PANORAMIC VIEWS

Enjoy stunning views of the valley and surrounding mountains all while being in close proximity of The Summit Lodge, Activities Barn, and outdoor infinity pool.

FEATURES

4 Bedrooms & 4 ½ Bathrooms

Views Mountain, Wooded

Architect E.L. Roach Architects

Builder Agsten Homebuilders

Year Built 2020

Landscape Architect Terracare

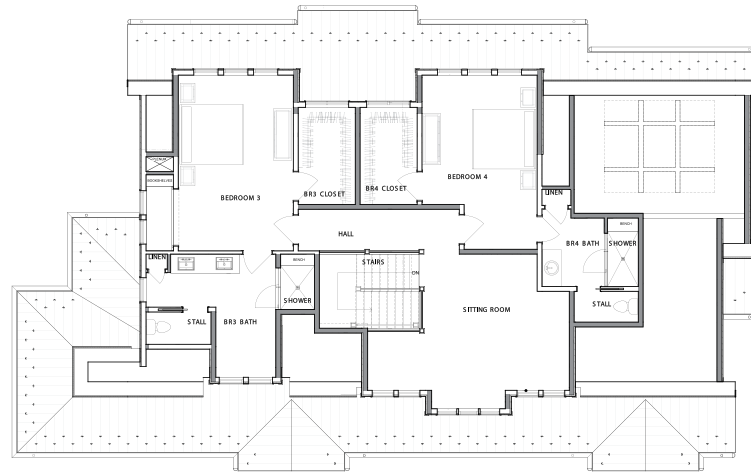
Square Footage 4274

Exterior Features

- Indigenous Stone Accents and Chimney
- Standing Seam Metal Roof
- Covered Front Porch
- Rear Outdoor Living with Grilling Station
- Western Red Cedar Board and Batten and Shake Siding

Interior Features

- Anderson Series 4 Windows and Doors
- Mahogany Front Entry Door
- Isokern Fireplace with Eldorado Stone Surround
- Hard-wired, Monitored Security System with Smoke, Heat, Water, Temperature, and Carbon Monoxide Detectors
- Custom High-end Painted Wood Cabinetry in Kitchen and Baths with Quartz and Granite Surfaces
- Motorized Curtains
- Subzero and Wolf Professional Appliances
- 9" Walnut Hardwood Plank Flooring
- Custom-tiled Floors and Showers in All Baths
- Coffered Ceilings in Foyer and Master with 5.25" Metrie Crown Molding
- Designer Light Fixtures, Including Kelly Wearstler, Peter Bristol, and Barbara Berry
- Custom-built Painted Wood Closet Shelving
- Furnishings Available for Purchase - Fully Shoppable Home



UPPER LEVEL



MAIN LEVEL



Greenbrier
LIVING

(855) 764-7398 • GreenbrierLiving.com
John Klemish, Broker-in-Charge
Real Estate Showroom located in the Lower Lobby

Real Estate at *America's Resort*™



Obtain the Property Report required by Federal law and read it before signing anything. No Federal Agency has judged the merits or value, if any, of this property. This is not intended to be an offer to sell nor a solicitation of offers to buy real estate in The Greenbrier Sporting Club by residents of Hawaii, Idaho, Illinois, and Oregon or in any other jurisdiction where prohibited by law. This project is registered with the New Jersey Real Estate Commission, N.J. Reg. No. 11-59-0002. This project is registered pursuant to New York State Department of Law's simplified procedure for Homeowners Associations with a De Minimus Cooperative Interest and contained in a CPS-7 application available from the sponsor. File No. HO-00-0082. This project is registered with the Pennsylvania State Real Estate Commission, Registration No. OL-000654. Use of recreational facilities and amenities requires separate club membership.



© 2019 The Greenbrier Sporting Club / 247 Kate's Mountain Road, White Sulphur Springs, WV 24986