



## WHITE SULPHUR HILL 59 - 382 WHITE SULPHUR HILL ROAD

Located in an exclusive gated Greenbrier Sporting Club neighborhood in close proximity to resort amenities including Center Court at Creekside, this home enjoys wonderful views of Howard's Creek and The Old White TPC. Superior craftsmanship is showcased including three stone fireplaces, a grand stone chimney, and two porches with outdoor views. The kitchen boasts granite counters, a separate built-in bar area with sink, commercial-grade appliances, hardwood flooring, and custom trim. The five bedrooms are each en-suite, providing extra privacy for all guests. The main level master bedroom has a private exterior door and can be used as an office or suite, separate from the main house. The second level master bedroom features a cathedral ceiling and amazing mountain vistas. The two master baths include soaking tubs with tiled showers and floors, Kohler fixtures, and natural lighting. The lower level offers a recreation/living room with a wet bar, guest bedroom, two bathrooms, stone fireplace, patio, and garage access, along with abundant storage.

*Greenbrier*  
LIVING

(855) 764-7398  
GreenbrierLiving.com



## LIVING ROOM WITH STRIKING STONE FIREPLACE

This large living space features an open floorplan and access to the outdoor pavilion and terrace. The floor-to-ceiling handset stone fireplace anchors the room, while large windows showcase the mountain views and ample natural light.

**Living Room Dimensions: 456 SF**



## CUSTOM CABINETRY AND GRANITE COUNTERTOPS

The gourmet kitchen is open to the dining and living space, and features custom cabinetry, stainless steel professional-grade appliances, and granite countertops throughout. A large center island and seating space offers ample room for even the busiest of kitchens.

**Kitchen Dimensions: 207 SF**



## MAIN LEVEL MASTER SUITE

This spacious main level master suite features hardwood flooring and convenient private entry from the front porch. The accompanying bathroom features a large soaking tub, double vanity, tiled shower and floor, plus Kohler fixtures.

**Main Level Master Suite Dimensions: 543 SF**



## UPPER LEVEL MASTER SUITE

The luxuriously appointed upper level master suite features a vaulted ceiling and wonderful views, while the bathroom includes a large soaking tub, tiled shower and floor, double vanity, and Kohler fixtures.

**Upper Level Master Suite Dimensions: 452 SF**

# FEATURES

5 Bedrooms & 5 Full, 2 Half Bathrooms

**Views** Wooded, Mountain, Golf Course

**Architect** The Highlands Group

**Builder** Rocky Estep of Erlewine Construction

**Year Built** 2008

**Landscape Architect** ???

**Square Footage** 4,825 Heated, 6,198 Total

## Exterior Features

- Large Outdoor Living Spaces Include Stone Fireplace & Expansive Views
- Cedar Shake Siding
- One-Car Garage with Ample Storage Space

## Interior Features

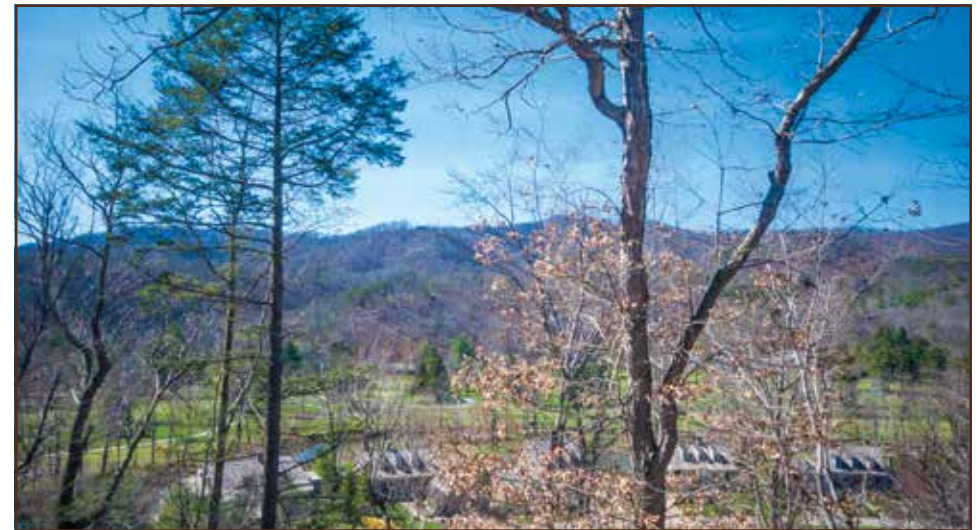
- Three Custom Stone Fireplaces
- Fine Architectural Details Including Stacked Stonework and Cedar Beams
- Sub-Zero and Wolf Commercial-Grade Appliances
- Granite Countertops
- Custom Cabinetry
- Large Kitchen Island
- Two Master Suites, One with Private Entry
- Lower Level Recreational/Den Space with Stone Fireplace and Wet Bar
- Hardwood Flooring & Carpeting Throughout
- Additional Room Dimensions:
  - Garage: 490 SF
  - Covered Side Pavilion with Ipe Decking: 432 SF
  - Lower Level Bedroom: 281 SF



## LARGE RECREATION/DEN SPACE

The lower level boasts a recreation/den space with a floor-to-ceiling handset stone fireplace, wet bar, Stark Carpet, and provides direct access to the outdoor covered terrace.

**Den Dimensions: 521 SF**



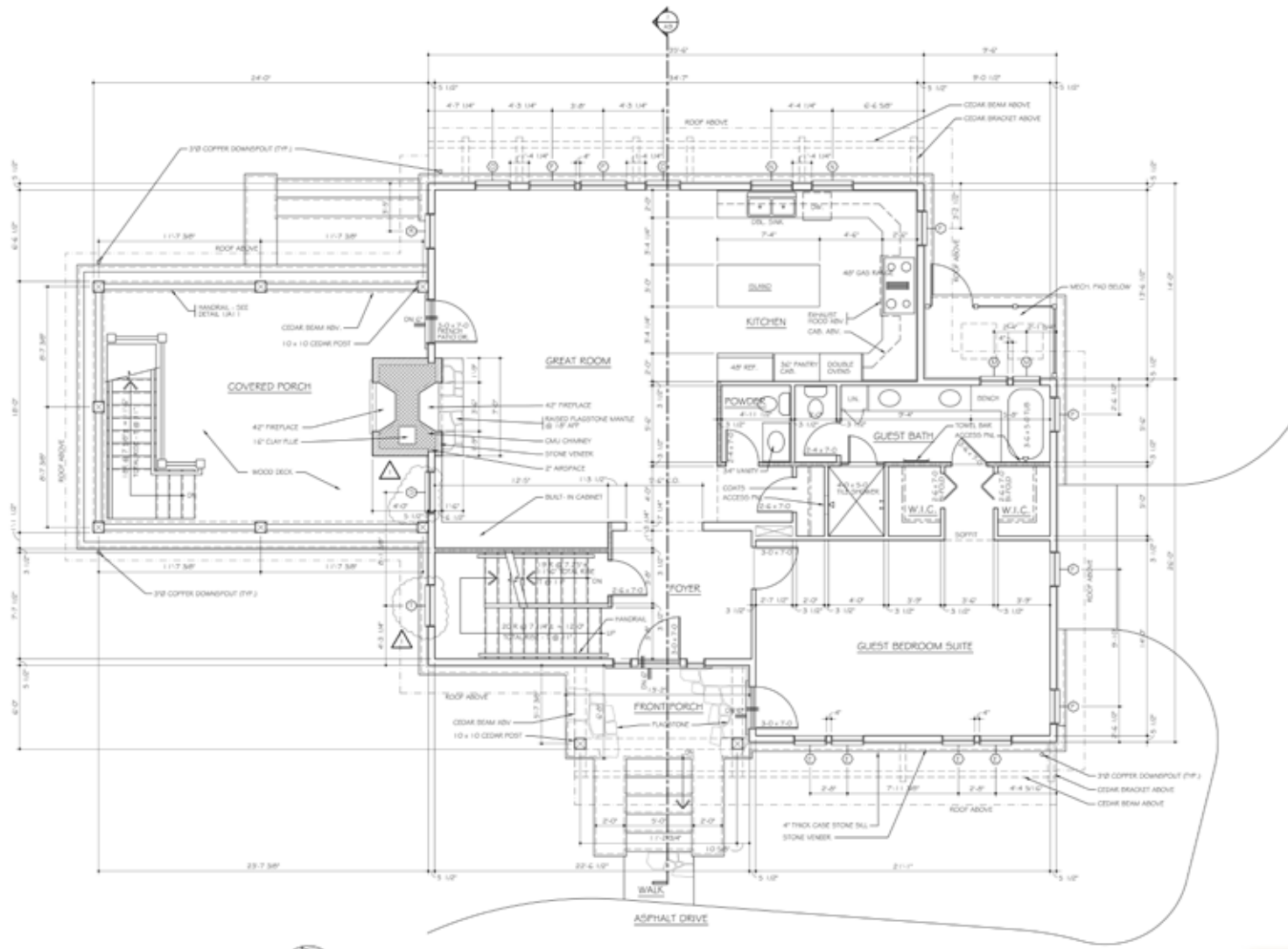
## FANTASTIC VIEWS

Opportunities for outdoor living are endless with the main level covered pavilion, stone fireplace, and lower level terrace. Enjoy spectacular views of the valley, Howard's Creek, and golf course from the terrace, pavilion, and the upper level master suite.

**Covered Side Pavilion Dimensions: 432 SF • Covered Terrace Dimensions: 572 SF**

# WHITE SULPHUR HILL 59 - 382 WHITE SULPHUR HILL ROAD

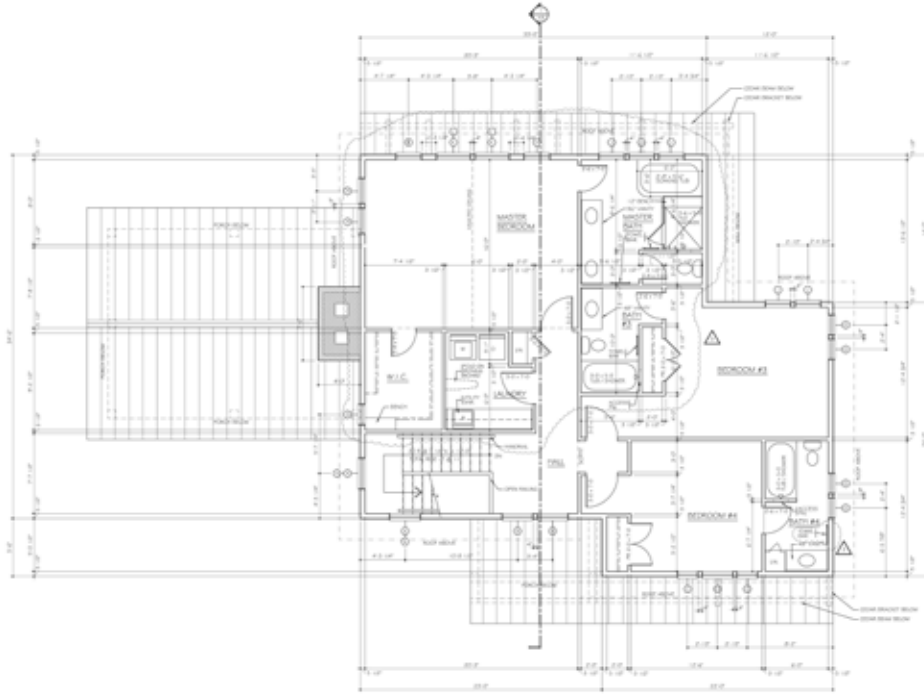
4,825 Square Feet



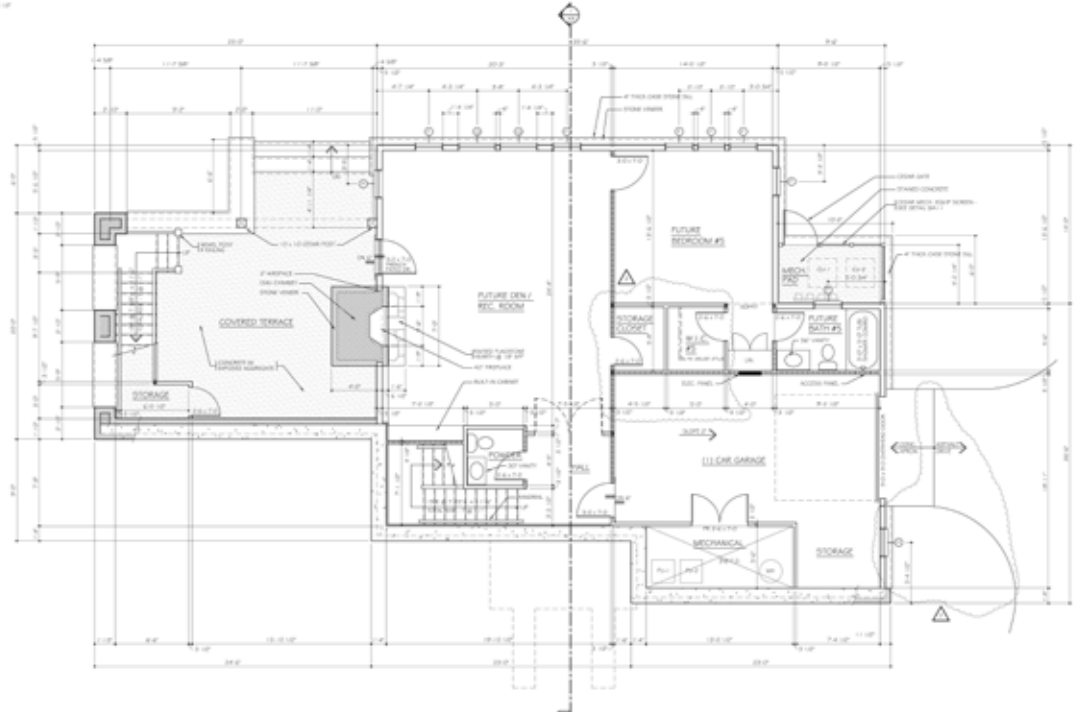
## MAIN LEVEL



# UPPER LEVEL



# LOWER LEVEL





*Greenbrier*  
LIVING

(855) 764-7398 • [GreenbrierLiving.com](http://GreenbrierLiving.com)  
John Klemish, Broker-in-Charge  
Real Estate Showroom located in the Lower Lobby

Real Estate at *America's Resort*™



Obtain the Property Report required by Federal law and read it before signing anything. No Federal Agency has judged the merits or value, if any, of this property. This is not intended to be an offer to sell nor a solicitation of offers to buy real estate in The Greenbrier Sporting Club by residents of Hawaii, Idaho, Illinois, and Oregon or in any other jurisdiction where prohibited by law. This project is registered with the New Jersey Real Estate Commission, N.J. Reg. No. 11-59-0002. This project is registered pursuant to New York State Department of Law's simplified procedure for Homeowners Associations with a De Minimus Cooperative Interest and contained in a CPS-7 application available from the sponsor. File No. HO-00-0082. This project is registered with the Pennsylvania State Real Estate Commission, Registration No. OL-000654. Use of recreational facilities and amenities requires separate club membership.



© 2019 The Greenbrier Sporting Club / 5 Kate's Mountain Road, White Sulphur Springs, WV 24986