



TRAVELLER'S HILL 9 - 262 DEER WOOD CIRCLE

Nestled in the mountains, overlooking The Greenbrier golf course and flanked with carefully curated and maintained grounds, this six bedroom, five full and three half bath, fully furnished, exquisite, custom retreat features breathtaking architectural elements including stacked stonework, stone archways and a natural stone balcony with deck floors and columns. The interior floors are adorned with antique Douglas Fir, marble and custom carpeting adding to the luxuriousness already evident. The gourmet kitchen flows to a screened porch or into the great room where you'll be awed by the 100-year-old hand-hewn beams, fireplace and 20-foot ceilings. The lower level boasts a game room, wine cellar and a private theatre with seating for 12. The luxurious master suite includes a morning kitchen, expansive walk-in closet, and master bath with corner tub, oversized shower and his and her vanities. The adjacent sitting room opens to a covered terrace perfect for relaxing. Luxurious living and casual elegance are exemplified in this palatial setting complete with three stone fireplaces, an elevator, and heated floors in each full bath ensuring comfort throughout.

Greenbrier
LIVING

(855) 764-7398
GreenbrierLiving.com



GREAT ROOM

The capacious great room is infused with breathtaking architectural elements including a twenty foot high antique Douglas fir ceiling adorned with hand-hewn beams derived from a British Columbian bridge, Fixed French and Clerestory windows, custom built-in cabinetry and hardwood flooring. The open scheme flows effortlessly into the kitchen and dining room, as well as the adjacent covered porch fashioning a delightful setting to entertain or relax.



MASTER SUITE

This master suite is the exemplification of a luxurious retreat. The spacious sleeping chamber features a quaint sitting nook with bow windows and direct access to the covered lanai offering multiple options to enjoy the beautiful picturesque views or the newest bestseller. Comprised of a jetted garden tub, steam shower, custom cabinetry and heated towel drawer, the elegant bathroom exudes relaxation.



SPACIOUS LOWER LEVEL FOR ENTERTAINING

Family and guests will flock to the lower level of this home to be entertained and awed by the panoramic mountain and fairway views. Functioning as the hub, the lower living room shares space with the rec room, and adjoins the climate controlled wine cellar as well as a private movie theatre. The possibilities are endless as you enjoy time with loved ones.



KITCHEN

This wondrous kitchen is a culinarians delight with advanced GE Advantium oven, Wolfe stove and oven, Subzero refrigerators and ice maker. The majestic, 5'4" x 9'7" Italian Travertine Island with custom maple cabinets is the central focal point providing ample space to create copious culinary masterpieces.

FEATURES

6 Bedrooms & 5 Full & 3 Half Bathrooms

Views Mountain, Fairway

Architect Leo Lewis

Builder The Pinnacle Group

Year Built 2005

Landscape Architect Frank Snodgrass

Square Footage 8,359

Exterior Features

- Thousands of square feet of stacked stonework
- Stone archways
- EAGLE brand exterior doors with Rocky Mountain hardware
- EAGLE brand windows
- Copper guttering
- Natural stone balcony with deck floors and columns
- Heated driveway and cart path

Interior Features

- Antique Douglas fir ceilings with a 7-step hand rubbed finish
- Hand-hewn beams from a bridge in British Columbia
- Twenty foot high ceiling in Great Room
- Antique Douglas fir and hand wrought iron railings on grand entry staircase
- Back staircase leading to all levels
- Granite, Travertine throughout
- Italian Travertine kitchen island measuring 5'4" x 9'7"
- Waterfall glass accents
- Antique Douglas fir interior doors with Rocky Mountain hardware
- West Virginia milled molding and trim work
- Waterworks and Kohler plumbing and fixtures
- Hammered antique copper or nickel sinks
- Steam shower in master bath
- Towel warming drawer in master bath
- GE Advantium oven, Wolfe, and Subzero appliances in kitchen
- Climate controlled wine cellar
- 12 seat theatre featuring 7.1 Dolby surround sound



REC ROOM

Set up to be the heart of entertaining, this spectacular zone includes a beautiful billiard table, wet bar in close proximity to the wine cellar and an adjoining 12-seat private movie theatre. Family and guests will relish their time in this astounding home.



THEATRE

Located in the lower level, this exquisite theatre provides an unmatched viewing experience. Leather lounge seating for 12, Dolby 7.1 surround sound and a projection screen providing crisp, clean visuals will be sure to entrance any movie buff.



Greenbrier
LIVING

(855) 764-7398 • GreenbrierLiving.com
John Klemish, Broker-in-Charge
Real Estate Showroom located in the Lower Lobby

Real Estate at *America's Resort*™



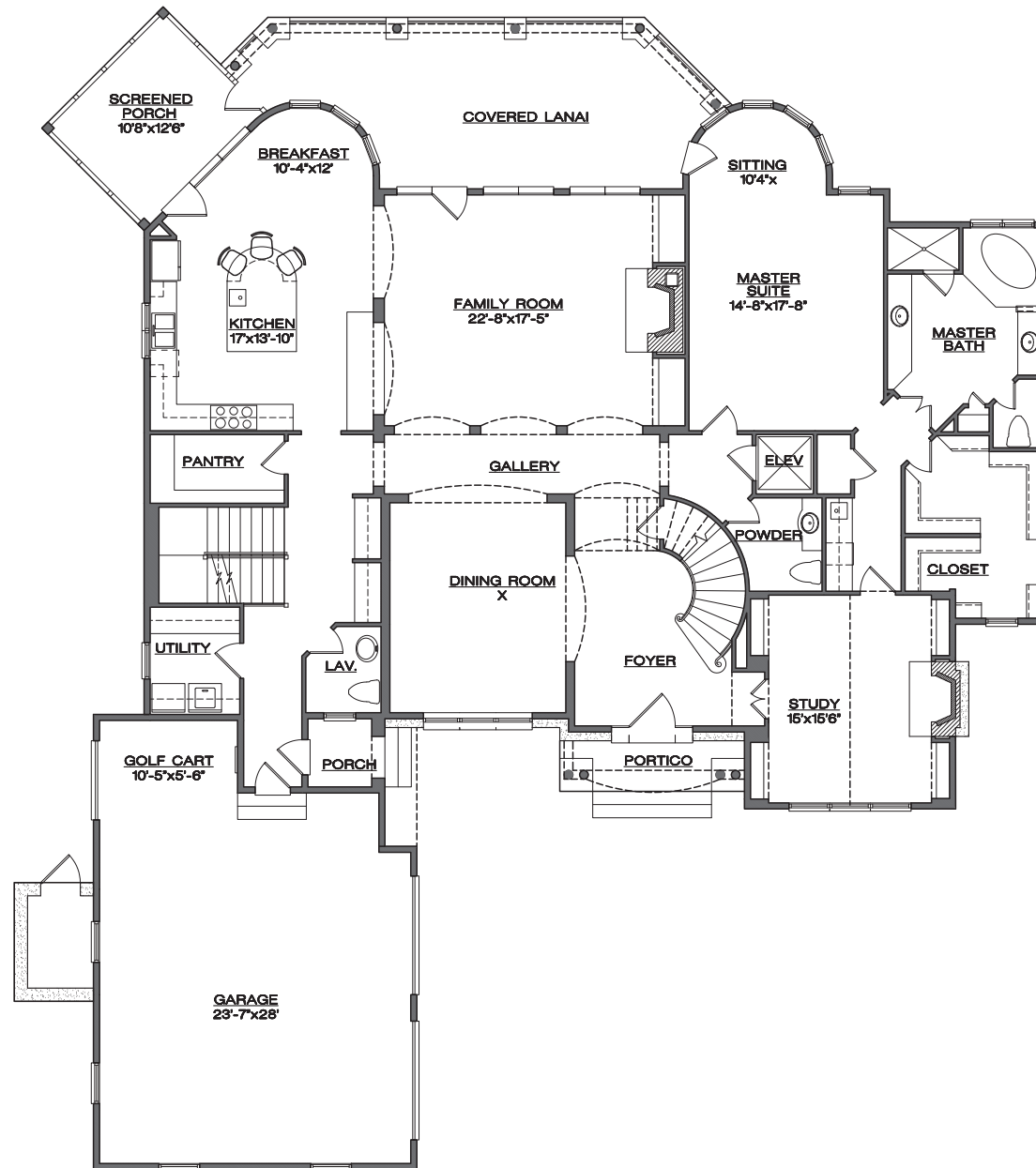
Obtain the Property Report required by Federal law and read it before signing anything. No Federal Agency has judged the merits or value, if any, of this property. This is not intended to be an offer to sell nor a solicitation of offers to buy real estate in The Greenbrier Sporting Club by residents of Hawaii, Idaho, Illinois, and Oregon or in any other jurisdiction where prohibited by law. This project is registered with the New Jersey Real Estate Commission, N.J. Reg. No. 11-59-0002. This project is registered pursuant to New York State Department of Law's simplified procedure for Homeowners Associations with a De Minimus Cooperative Interest and contained in a CPS-7 application available from the sponsor. File No. HO-00-0082. This project is registered with the Pennsylvania State Real Estate Commission, Registration No. OL-000654. Use of recreational facilities and amenities requires separate club membership.



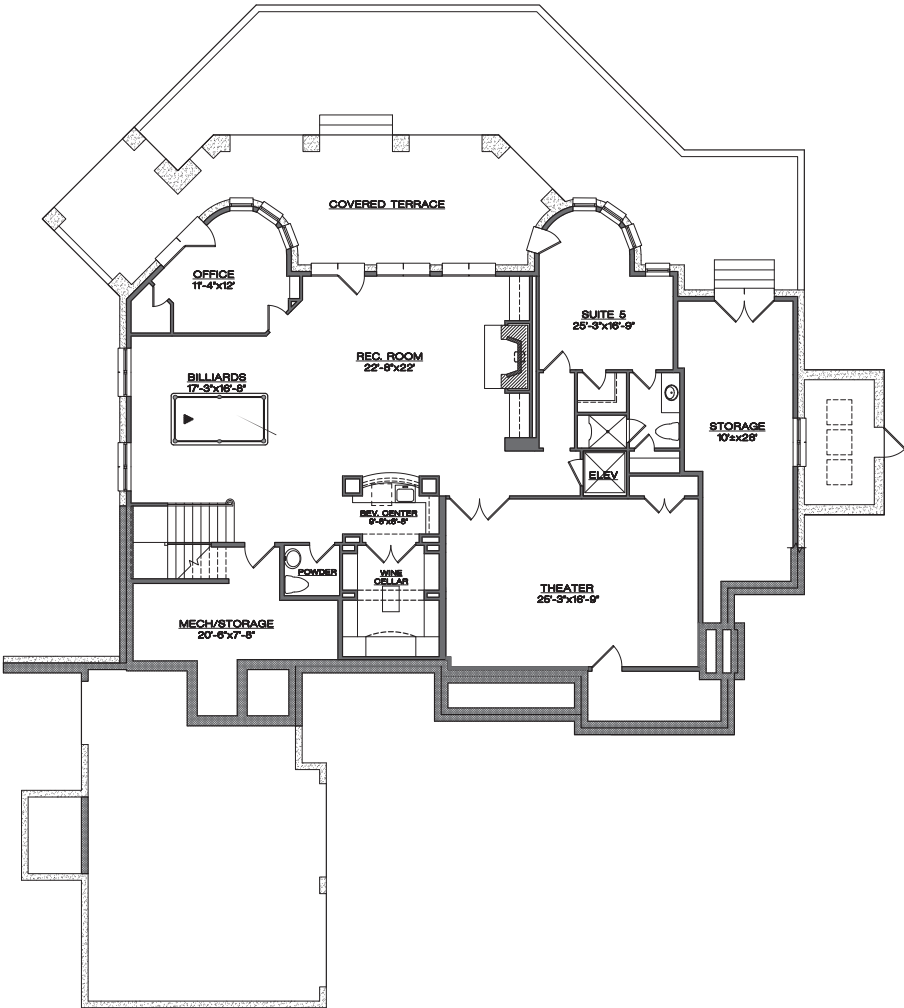
© 2019 The Greenbrier Sporting Club / 5 Kate's Mountain Road, White Sulphur Springs, WV 24986

TRAVELLER'S HILL 9 - 262 DEER WOOD CIRCLE

MAIN LEVEL



LOWER LEVEL



UPPER LEVEL

