

WHITE SULPHUR HILL 51 - 240 WHITE SULPHUR HILL ROAD

This peaceful retreat in the exclusive White Sulphur Hill neighborhood offers unmatched privacy and convenient, easy access to all the amenities of The Greenbrier, just minutes from the hotel, golf, tennis, dining, fitness, and shopping. One of the nicest homes on Greenbrier property, the newly updated 6 bed, 7.5 bath home has space for all your guests, and features exposed timber, stone reclaimed from a historic 1870s Salt Sulphur Springs hotel in Monroe County, West Virginia, and thermal-heated slate floors. The kitchen boasts a Viking range and premium finishes. An elegant, wood-paneled library is perfect to relax, read, or work. Outside, a natural stone archway opens up to your secluded gardens and a quiet patio, tucked into the heavily wooded backyard.

Greenbrier
LIVING

(855) 764-7398
GreenbrierLiving.com



SPACIOUS GREAT ROOM

This grand space features a stunning floor-to-ceiling stone fireplace, adorned with a mantel crafted from a 150 year old hemlock on property. The aged and treated oak beams add a stunning element, making this room the center of attention.

Great Room Dimensions: 17'2" x 22'5" = 385 SF



MASTER SUITE

The spacious master suite is luxuriously appointed, and features his and her granite bathrooms, heated stone and marble flooring, custom shutters, and onyx fixtures. This space is truly a retreat of its own.

Master Suite Dimensions: 16' x 14'9" = 236 SF



DINING ROOM

The dining room features large windows, providing natural light to fill the space. Easily accessible to the kitchen, this room is perfect for entertaining a small gathering or a large dinner party of 10.

Dining Room Dimensions: 15' x 12'9" = 191 SF



GOURMET KITCHEN

This kitchen is a gourmet chef's delight, offering all the top appliances and finishes. Granite countertops, tile flooring, and designer cabinetry complete this amazing space. Convenient access to the dining and living areas, as well as the laundry room, provide for an efficient flow from room to room.

Kitchen Dimensions: 24'2" x 16'9" = 405 SF

FEATURES

6 Bedrooms & 7½ Baths

Views Eastern, Mountain, and Wooded

Architect John Fulton Associates, LLC & Rattner

Builder J.M. Turner Homes

Year Built 2003

Stone Masonry Tom Cullen of Allegheny Stoneworks

Landscape Architect Riverbend Nursery

Square Footage 5,200 Heated, 6,200 Total

Exterior Features

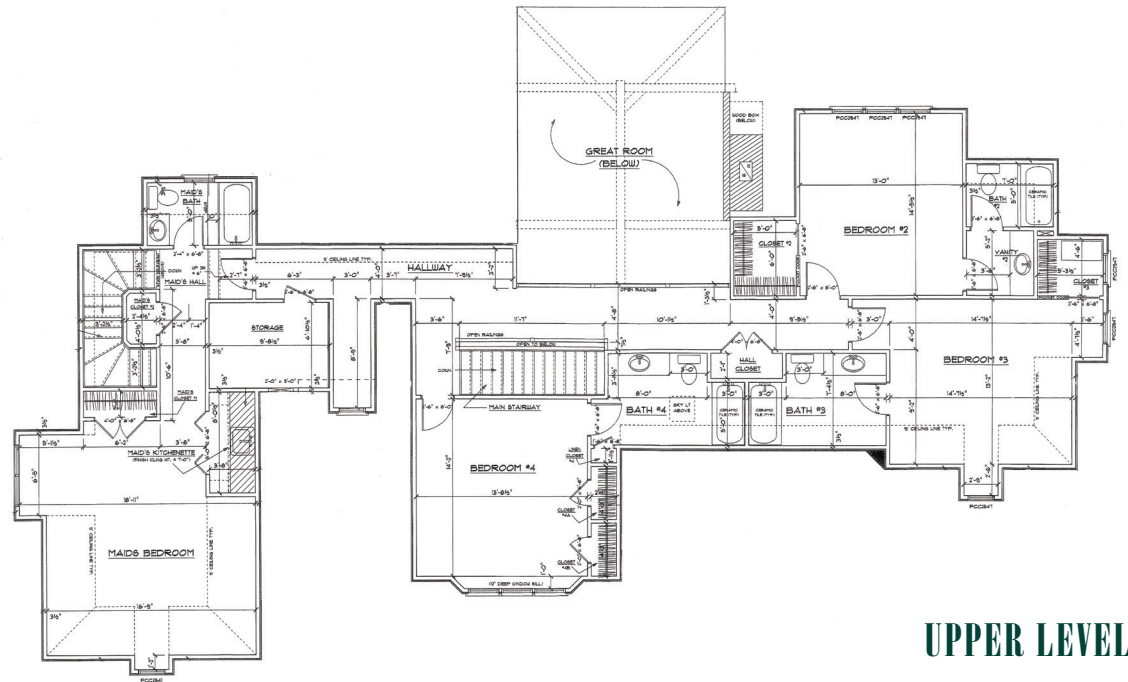
- Features Stone Reclaimed from Historic 1870s Salt Sulphur Springs Hotel in Monroe County, West Virginia
- Slate Roof with Copper Flashing
- Mahogany Front Door with Latch from Russia

Interior Features

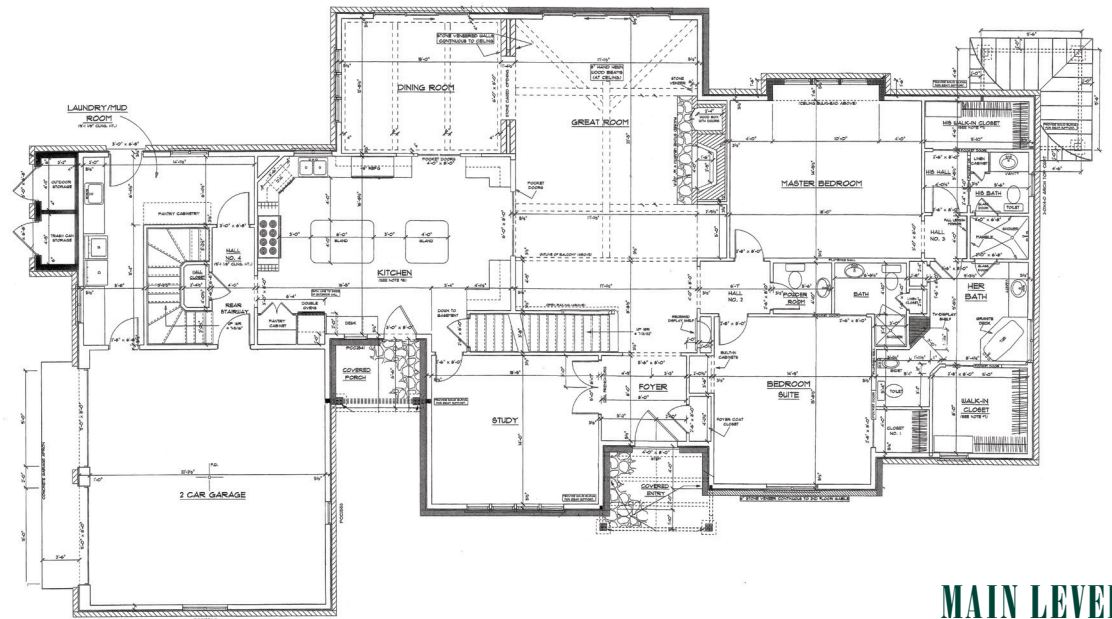
- Hemlock Fireplace Mantel from a Tree on Property
- Onyx Hardware in Master Bath
- Wood-burning Fireplace with Gas Starter in Great Room
- Aged and Treated Oak Beams
- Custom Cabinetry in Kitchen and Study
- Glass-front Cabinets by Classical Design in Roanoke, VA
- Alarm & Security System
- Main Floor Features Slate Floor with Radiant Heat
- Basement Features Tuff-N-Dri Waterproofing System

Additional Room Dimensions

- Study: 14' x 15'9" = 221 SF
- Main Level Guest Suite: 14'8" x 15'9" = 231 SF
- Bedroom 2: 13' x 14'6" = 189 SF
- Bedroom 3: 14'8" x 13'2" = 193 SF
- Bedroom 4: 13'9" x 14'2" = 195 SF
- Guest Apartment: 16'9" x 18'3" = 306 SF



UPPER LEVEL



MAIN LEVEL



Greenbrier
LIVING

(855) 764-7398 • GreenbrierLiving.com
John Klemish, Broker-in-Charge
Real Estate Showroom located in the Lower Lobby

Real Estate at America's Resort™



Obtain the Property Report required by Federal law and read it before signing anything. No Federal Agency has judged the merits or value, if any, of this property. This is not intended to be an offer to sell nor a solicitation of offers to buy real estate in The Greenbrier Sporting Club by residents of Hawaii, Idaho, Illinois, and Oregon or in any other jurisdiction where prohibited by law. This project is registered with the New Jersey Real Estate Commission, N.J. Reg. No. 11-59-0002. This project is registered pursuant to New York State Department of Law's simplified procedure for Homeowners Associations with a De Minimus Cooperative Interest and contained in a CPS-7 application available from the sponsor. File No. HO-00-0082. This project is registered with the Pennsylvania State Real Estate Commission, Registration No. OL-000654. Use of recreational facilities and amenities requires separate club membership.



© 2019 The Greenbrier Sporting Club / 5 Kate's Mountain Road, White Sulphur Springs, WV 24986